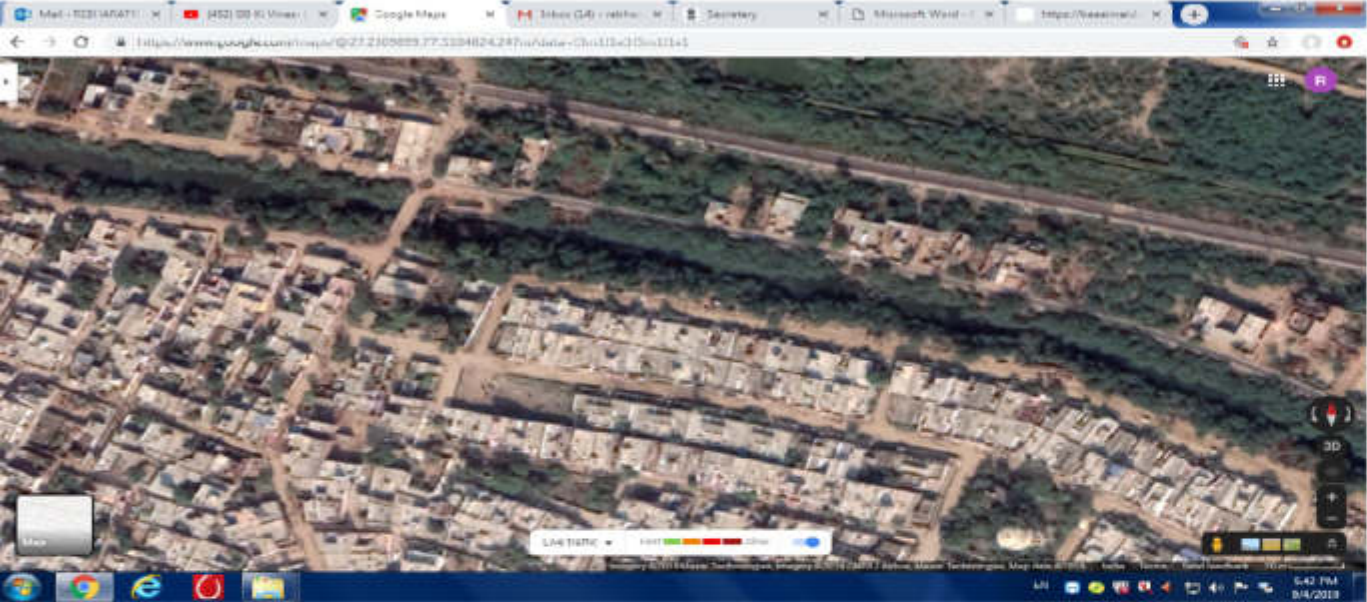
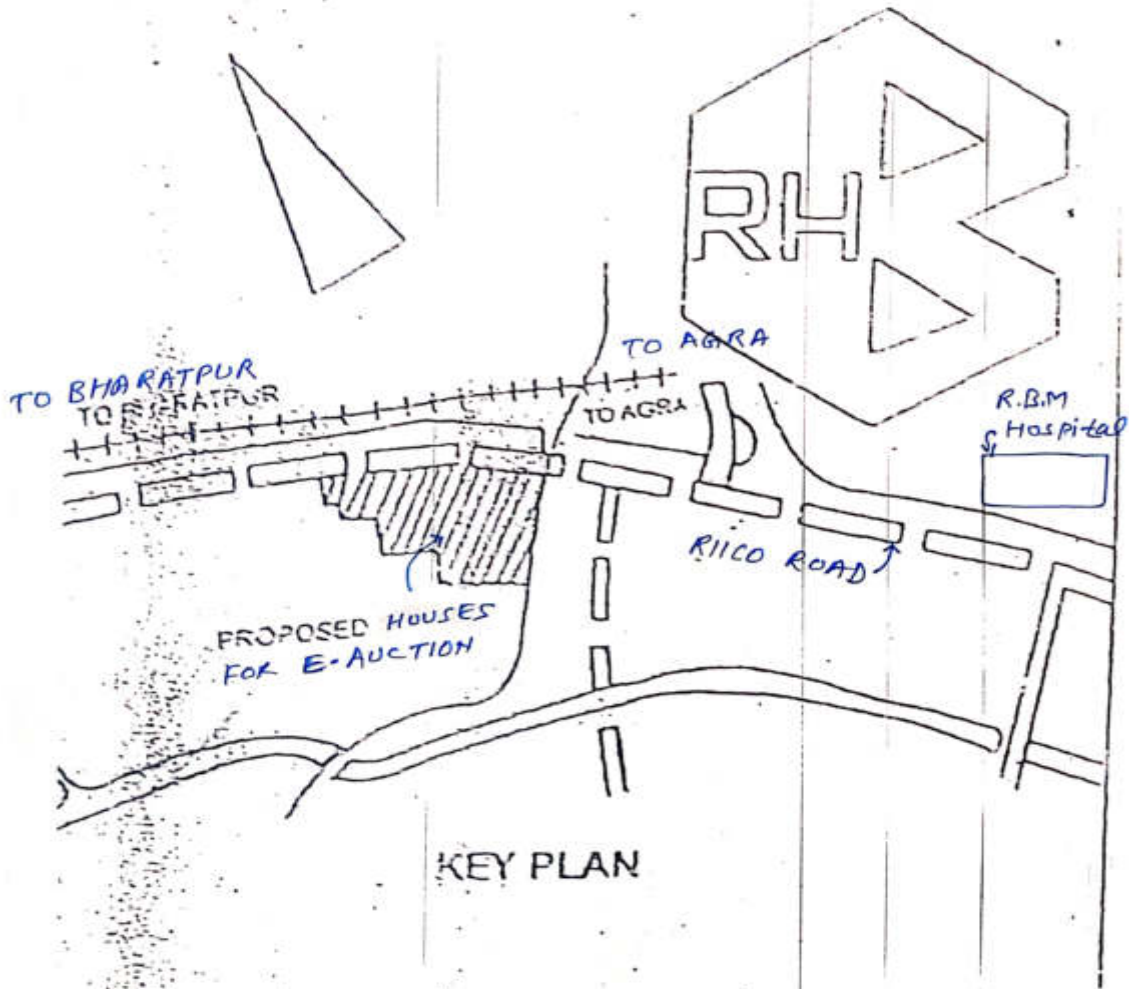


# S.T.C. Scheme, Bharatpur



Key Plan S.T.C scheme, Bharatpur

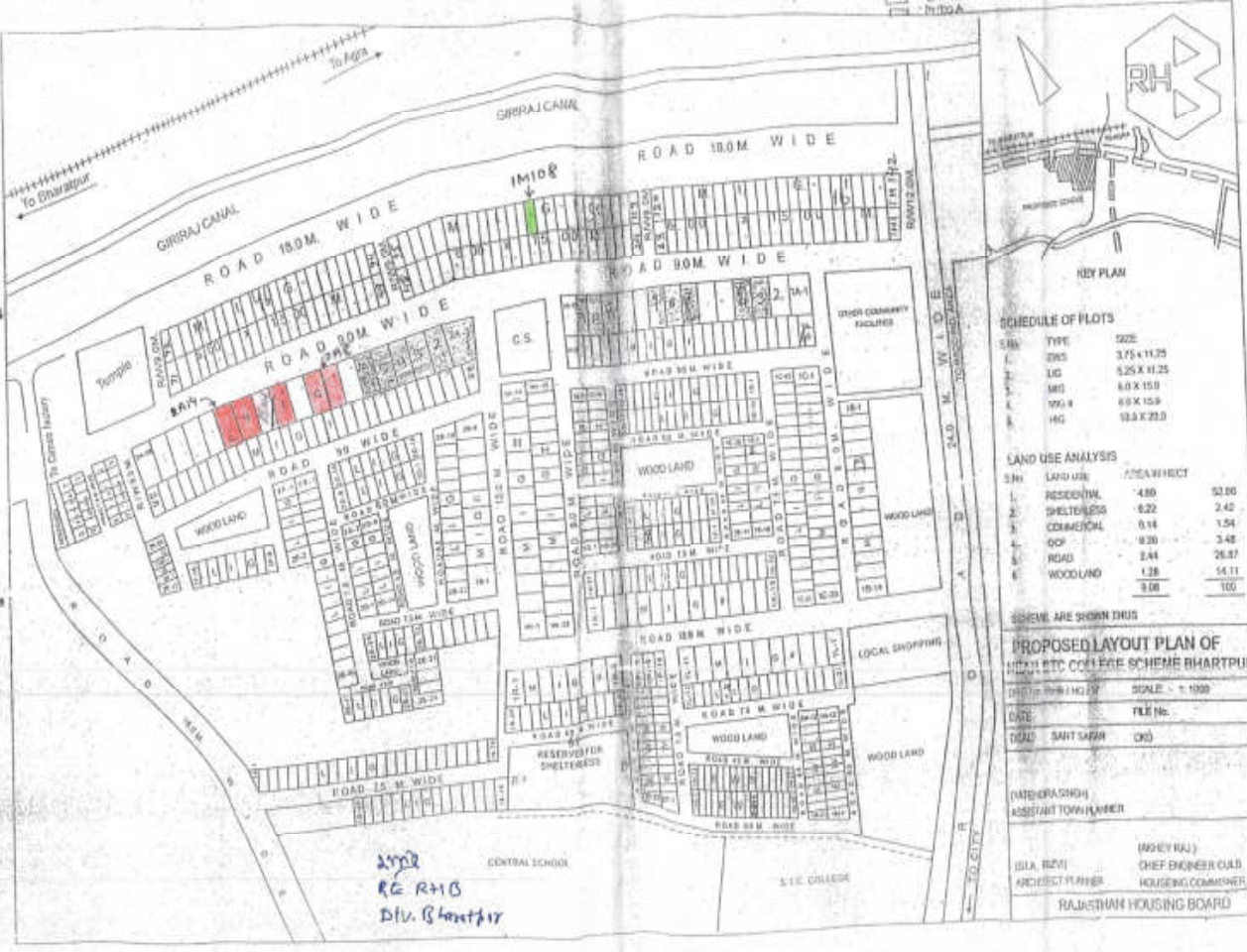


**INDEX**

- HIG Houses - 2, 8, 9, 11, 13, 14 = 0.5 Nos
- MIG-A = 1 MIG

- HIG
- MIG
- G.M.I
- M.D.A

Reserving Plot



**KEY PLAN**

**SCHEDULE OF PLOTS**

S.No.	TYPE	SIZE
1.	DWS	3.75 X 11.25
2.	LIG	5.25 X 11.25
3.	MIG	6.0 X 15.0
4.	MIG-A	6.5 X 15.0
5.	HIG	12.0 X 22.0

**LAND USE ANALYSIS**

S.No.	LAND USE	AREA (HECT)	% OF TOTAL
1.	RESIDENTIAL	4.80	52.00
2.	WELFARE	6.22	2.42
3.	COMMERCIAL	0.14	1.54
4.	GOV.	9.30	3.48
5.	ROAD	2.44	26.87
6.	WOOD LAND	1.28	14.11
		9.08	100

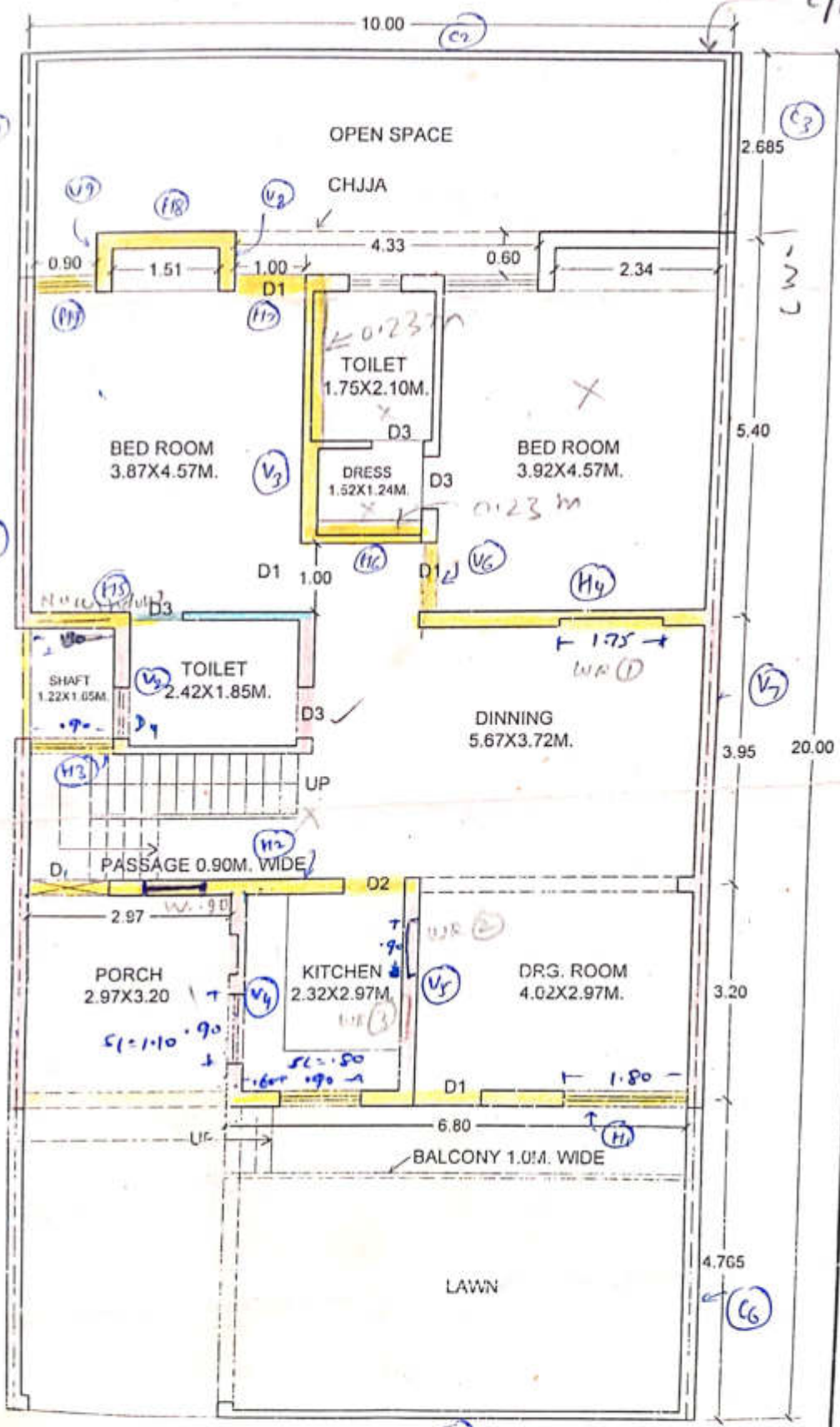
SCHEME ARE SHOWN THIS

**PROPOSED LAYOUT PLAN OF STC SCHEME BHARATPUR**

DATE	FILE No.
DATE	DATE
(ARCHITECT)	ASSTANT TOWN PLANNER
(S.E. (R))	(S.E. (R))
ARCHITECT PLANNER	CHIEF ENGINEER C.A.D. HOUSING COMMISSIONER
RAJASTHAN HOUSING BOARD	

**STC Scheme Bharatpur HIG houses**

H.I.G.(10.00X20.00M.) S.T.C. SCHEME BHARATPUR.



GROUND FLOOR PLAN

$D_1 = 1000 \times 2000$   
 $D_2 = 900 \times 2000$   
 $D_3 = 800 \times 2000$   
 $S.L = 0.80M$   
 $C.L = 2.05M$   
 $R.L = 3.05$