

LAND USE ANALYSIS :-

| S.NO. | USE | AREA IN HECTORE | PERCENTAGE |
|-------|-------------|-----------------|------------|
| 1. | RESIDENTIAL | 2.6 | 47.8 % |
| 2. | COMMERCIAL | 0.20 | 2.67 % |
| 3. | O.C.F. | 0.20 | 2.67 % |
| 4. | WOOD LAND | 0.13 | 2.38 % |
| 5. | ROAD | 1.60 | 30.00 % |
| 6. | RESERVED | 1.01 | 14.48 % |
| TOTAL | | 5.44 | 100 % |

SCHEDULE OF PLOTS :-

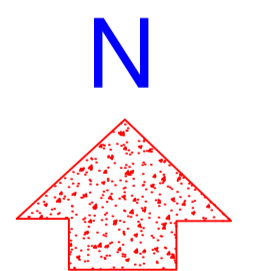
| S.NO. | CATEGORY | SIZE | NOS.OF PLOTS |
|-------|------------|----------------|--------------|
| 1. | GHARONDA. | 3.75 X 8.0 M. | 32 |
| 2. | E.W.S. | 4.0 X 10.5 M. | 123 |
| 3. | L.I.G. | 6.0 X 15.0 M. | 116 |
| 4. | M.I.G. (A) | 8.0 X 15.0 M. | 28 |
| 5. | M.I.G. (B) | 9.0 X 18.0 M. | 08 |
| 6. | H.I.G. | 10.5 X 20.0 M. | 07 |
| TOTAL | | | 314 |

SCHEME BOUNDARY SHOWN THUS

P.H.E.D AREA SHOWN THUS

CHANGE IN LAND USE FROM OCF TO PU APPROVED IN 130 PC MEETING HELD ON DT. 20.10.2011 (AEGJNDA ITEM NO. 13)

NOTE :-
NUMBERING PLAN CHANGE AS PER SIDE CONDITION

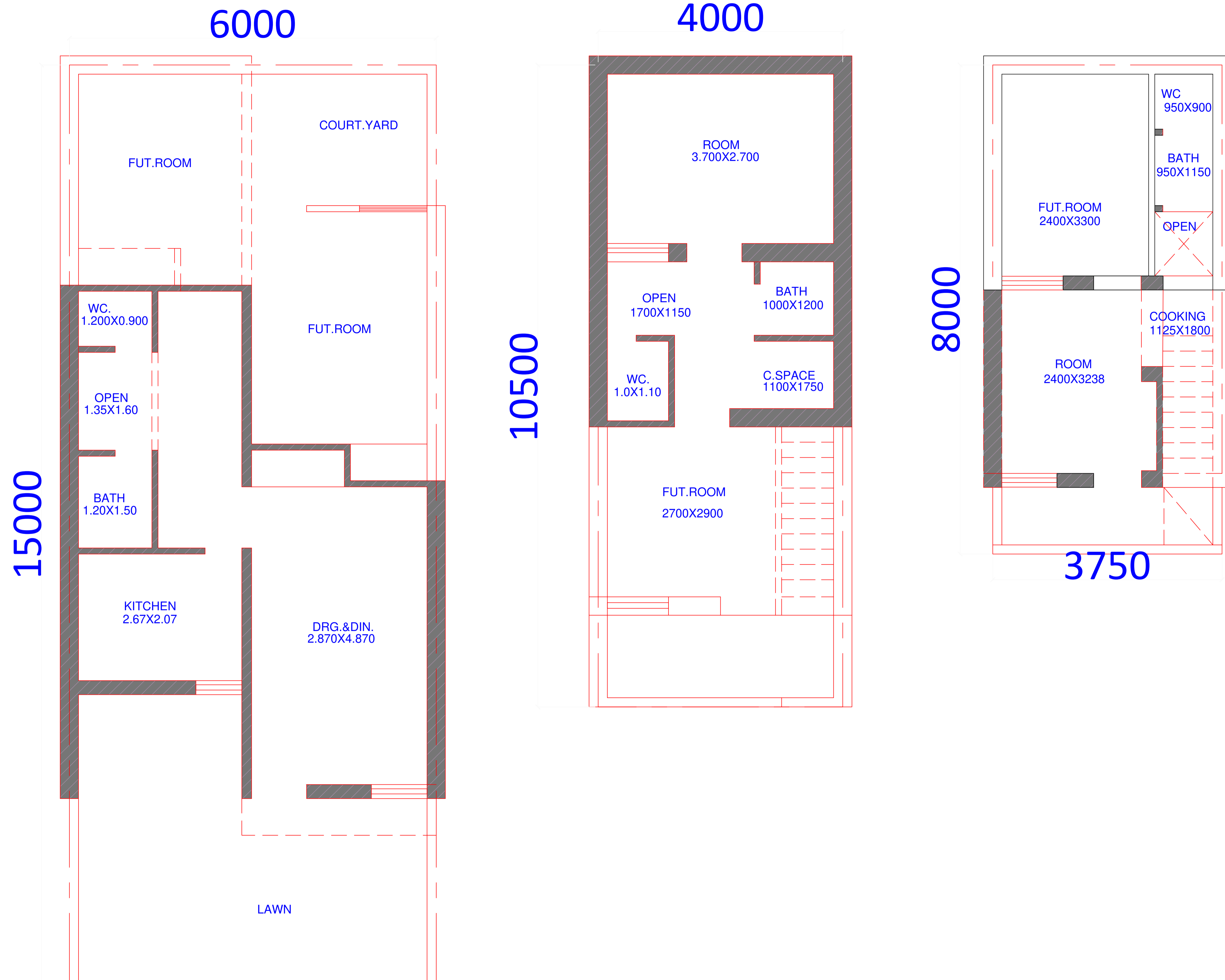


PROPOSED LAUOUT PLAN OF RESIDENTIAL SCHEME AT MALHARGANJ (JHALAWAR)

| | |
|---------------------------------------|-----------------------------------|
| DRG:- RHB/HQ/2009/88 | SCALE :- 1:1000 |
| DATE :- 01.07.2009 | FILE NO :- |
| DEALT BY:- P.R. SHINGHMAR (SR. D/MAN) | CHECKED :- M.L. BALODIYA (T.P.A.) |
| ASSISTANT TOWN PLANNER | SENIOR TOWN PLANNER |
| ADD :- CHIEF TOWN PLANNER | HOUSING COMMISSIONER |

RAJASTHAN HOUSING BOARD

TYPE DESIGN OF MALHARGANJ





**Gharonda (P.A. ≈ 9.96 Sqm.
CHS Chomehla**

view of Chomehla Scheme Distt.
Jhalawar





**EWS (P.A.= 12.46 Sqm.
CHS Chomehla**



LIG (P.A.= 37.54 Sqm.
CHS Chomehla